



When Technology Becomes an Art

Customized designs
Unlimited color palette
Quality control and brand supervision
(Long service life (does not fall apart
reasonable cost

Wide range of wet area outlets
aesthetic appearance

All products are labeled with safety standards
and packaging clarifications in more than one
language

Convenience of connecting wires

 www.ukko-co.com



UKKO Catalog

2022

UKKO ELECTRICAL INDUSTRY CO., LIMITED

奥科电器实业有限公司



When Technology Becomes an Art

Why us

In Oko, we believe in the effectiveness of cooperation and participation between all parties to the work, and we walk with our partners in the production journey from the design stage to the production of the product in the best form and the highest quality depending on a professional cadre of designers, engineers and well-trained workers, we are passionate about what we make, so we gathered art, modernity and technology developed in our industry, so that our mission is to satisfy our partners and reach together to a prestigious level of global competition

With the presence of modern mechanisms, and unlimited options of types, shapes and materials, professionalism, development and creativity becomes what makes Oko your best partner to become a brilliant name in the market of electrical switches

Contact us

✉ info@ukko-co.com ☎ +90212 232 30 07

📍 Lorem ipsum dolor ☎ +90212 232 30 07



About us

In the most important and first cities around the world in the field of technology in the Chinese city of Shenzhen, which was and still is the first destination

For factory and technology pioneers with the purpose of designing and 2012 Oko started in manufacturing electrical switches and environmentally friendly products

Of all kinds and forms, and since its establishment, it began its journey to create practical and easy solutions that keep pace with development, and that is

In accordance with international standards that can fully meet the needs of customers

When art and technology meet, they produce a high quality product with different creative designs for electrical switches and sockets

And that is through an integrated team that includes expert designers and engineers in addition to a quality control team

He works with high efficiency to produce products with the best specifications using years of experience

Our first motto is our success from the success of our customers, so we share our ideas with our suppliers and customers in the face of market demands

Changing and competitive conditions, and we provide distinguished and constantly evolving solutions to suit all circumstances

Yoko accompanies you in the journey of manufacturing the product until reaching its final form, and this is what made it a strong competitor in the local market

And Africa, the Middle East and South America in an effort to be one of the best manufacturers and suppliers around the world



The whole module is made of PC flame retardant and environmentally friendly material, featuring good rigidity, impact resistance, heat resistance and flame retardancy.

The surface of the high-precision phosphor bronze contact pin is gold-plated, with good contact and oxidation resistance, ensuring data stability and high-speed transmission.

The overall PCB type compensation design guarantees the best performance of NEXT and PSNEXT, effectively improving the near-end crosstalk margin.

The needle adopts phosphor bronze, the transmission and contact performance reaches the Gigabit network standard, and the 45 degree chamfer design makes the cable easily broken and provides reliable cable tensile strength. Rotary-type threading, no need for tools to facilitate installation greatly improve work efficiency, protect the internal IDC contacts from working in harsh environments.

ROHS standard.



The pass-through module is divided into five types and six types, which are suitable for the conversion function of network line input and output. The surface of the high-precision phosphorous copper contact pin is gold-plated, and the surface coating of 3u-50u can be customized to meet different needs.

The outer casing is made of PC flame retardant and environmentally friendly material, which has the characteristics of good rigidity, impact resistance, heat resistance and flame retardancy.

Built-in high-efficiency data processing circuit board to ensure the stability of data and effectively improve the near-end crosstalk margin. The snap-in shrapnel design is directly stuck in the empty panel, and the empty distribution frame and the two-wire connection are extended, eliminating the need for wiring and saving time and effort.

ROHS standard



The gold needle is gold-plated on the entire surface to improve contact performance, prevent surface oxidation and extend warranty life.

Tool-free wiring, fast and simple, greatly improving work efficiency.

The serrated circular lip can be connected to two 0.35-0.50mm lines at the same time, which greatly enhances the tightness of the wire clamping and ensures stable signal transmission.

The overall PCB type compensation design guarantees the best performance of NEXT and PSNEXT, effectively improving the near-end crosstalk margin.

ROHS standard.



The whole module is made of PC flame retardant and environmentally friendly material, which has the characteristics of good rigidity, impact resistance, heat resistance and flame retardancy.

> The surface of the high-precision phosphor bronze contact pin is gold-plated, with good contact and oxidation resistance, ensuring data stability and high-speed transmission.

> The overall PCB type compensation design guarantees the best performance of NEXT and PSNEXT, effectively improving the near-end crosstalk margin.

> Gold type wire-bonding, no need for tools to facilitate installation greatly improve work efficiency, transparent PC made of crimping cover is effective against dust and aging.

> Phosphorous copper nickel-plated terminal block series design is suitable for a variety of twisted pair cables of 0.35-0.65mm. The pressure line is firm and stable and can be used repeatedly.

> ROHS standard.



Imported transparent PC flame retardant material, the overall crystal clear, a variety of color choices, easy to separate color block area.

The surface of the high-precision phosphor bronze contact pin is gold plated, with good contact and oxidation resistance, ensuring data stability and high-speed transmission. The needle is made of phosphor bronze. The transmission and contact performance reaches the Gigabit network standard, and the 45 degree chamfer design makes the cable easily broken.

The overall PCB type compensation design guarantees the best performance of NEXT and PSNEXT, effectively improving the near-end crosstalk margin.

Applicable to brand distribution frame and 86 panel.

ROHS standard.



Independent design, simple and beautiful and compact Ergonomically easy to use. easy to use line design

Unique PCB circuit board line balance design, reduce interference, high margin The design of the zinc alloy monolithic shield is in line with the industry specifications for shielding effectiveness.

With T 568A and T 568B two common line sequences, the universal line sequence label is clearly marked on the module

Rugged and corrosion-resistant IDC wire post clamp is phosphor bronze, guaranteeing more than 250 terminations

The termination protection cap has a snap-lock design to ensure that the cable avoids excessive bending, shedding and protection

of the contact points after termination.

System with backward compatibility compatible with CAT 6 and lower categories

ROHS standard.



It offers a choice of single port and dual port, and is compatible with the 86 bottom box.

The single port, dual-port panel has a dust cover to prevent dust from entering the interface.

With identification strips or application identification for easy number management and maintenance use.

The combined structure, front and rear double-layer panel design, beautiful appearance, to avoid the fixing screw hole exposed.

Material: PC/ABS. ROHS standard.



The whole module is made of PC flame retardant and environmentally friendly material, featuring good rigidity, impact resistance, heat resistance and flame retardancy.

High-precision phosphor bronze curved high-low needle surface is gold-plated, with good contact and oxidation resistance, ensuring data stability and high-speed transmission.

The overall PCB type compensation design guarantees the best performance of NEXT and PSNEXT, effectively improving the near-end crosstalk margin.

The needle is made of phosphor bronze. The transmission and contact performance reaches the Gigabit network standard. The 180 degree cable routing design allows the cable to withstand the minimum mechanical pressure.

The transparent IDC fixed back cover helps the user to check the termination condition for cable fixing.

Port inverting dust-proof door design protects the unused gold pin performance.

ROHS standard.

Model number
UK - 1001



Model number
UK - 1002



Model number
UK - 1009



Model number
UK - 1010



Model number
UK - 1003



Model number
UK - 1004



Model number
UK - 1011



Model number
UK - 1012



Model number
UK - 1005



Model number
UK - 1006



Model number
UK - 1013



Model number
UK - 1014



Model number
UK - 1007



Model number
UK - 1008



Model number
UK - 1015

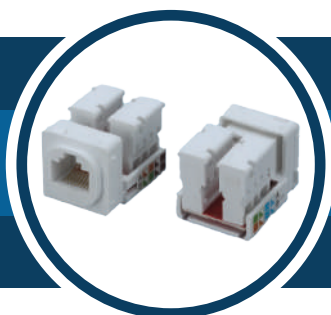


Model number
UK - 1016





Model number
UK - 1017



Model number
UK - 1018



Model number
UK - 1025



Model number
UK - 1026



Model number
UK - 1019



Model number
UK - 1020



Model number
UK - 1027



Model number
UK - 1028



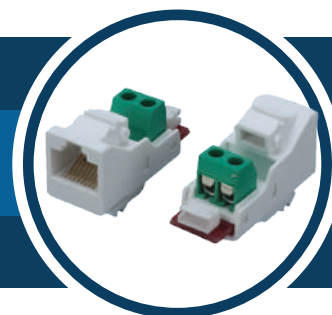
Model number
UK - 1021



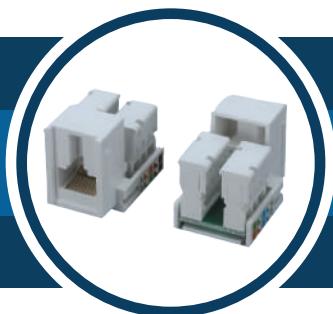
Model number
UK - 1022



Model number
UK - 1029



Model number
UK - 1030



Model number
UK - 1023



Model number
UK - 1024



Model number
UK - 1031



Model number
UK - 1032

Model number
UK - 1033



Model number
UK - 1034



Model number
UK - 1041



Model number
UK - 1042



Model number
UK - 1035



Model number
UK - 1036



Model number
UK - 1043



Model number
UK - 1044



Model number
UK - 1037



Model number
UK - 1038



Model number
UK - 1045



Model number
UK - 1046



Model number
UK - 1039



Model number
UK - 1040



Model number
UK - 1047



Model number
UK - 1048



Model number
UK - 1049



Model number
UK - 1050



Model number
UK - 1057



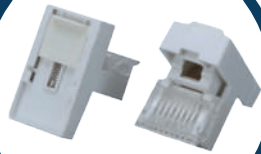
Model number
UK - 1058



Model number
UK - 1051



Model number
UK - 1052



Model number
UK - 1059



Model number
UK - 1060



Model number
UK - 1053



Model number
UK - 1054



Model number
UK - 1061



Model number
UK - 1062



Model number
UK - 1055



Model number
UK - 1056



Model number
UK - 1063



Model number
UK - 1064



Model number
UK - 1065



Model number
UK - 1066



Model number
UK - 1073



Model number
UK - 1074



Model number
UK - 1067



Model number
UK - 1068



Model number
UK - 1075



Model number
UK - 1076



Model number
UK - 1069



Model number
UK - 1070



Model number
UK - 1077



Model number
UK - 1078



Model number
UK - 1071



Model number
UK - 1072



Model number
UK - 1079



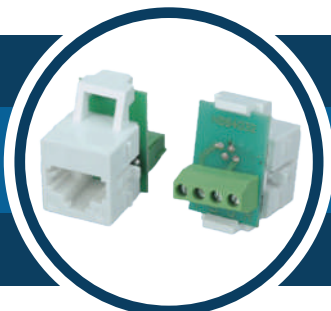
Model number
UK - 1080



Model number
UK - 1081



Model number
UK - 1082



Model number
UK - 1089



Model number
UK - 1090



Model number
UK - 1083



Model number
UK - 1084



Model number
UK - 1091



Model number
UK - 1092



Model number
UK - 1085



Model number
UK - 1086



Model number
UK - 1093



Model number
UK - 1094



Model number
UK - 1087



Model number
UK - 1088



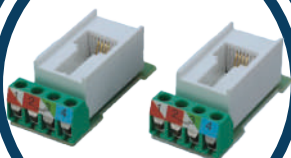
Model number
UK - 1095



Model number
UK - 1096



Model number
UK - 1097



Model number
UK - 1098



Model number
UK - 1105



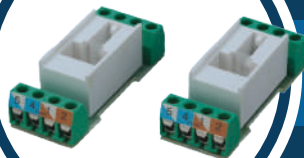
Model number
UK - 1106



Model number
UK - 1099



Model number
UK - 1100



Model number
UK - 1107



Model number
UK - 1108



Model number
UK - 1101



Model number
UK - 1102



Model number
UK - 1109



Model number
UK - 1110



Model number
UK - 1103



Model number
UK - 1104



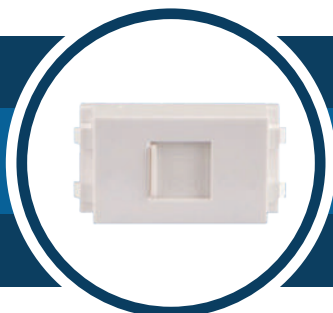
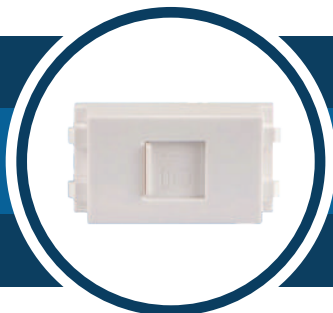
Model number
UK - 1111



Model number
UK - 1112

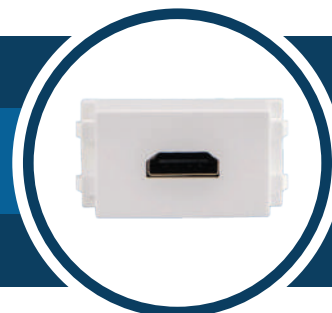


Model number
UK - 1113



Model number
UK - 1114

Model number
UK - 1121



Model number
UK - 1122

Model number
UK - 1115



Model number
UK - 1116

Model number
UK - 1123



Model number
UK - 1124

Model number
UK - 1117



Model number
UK - 1118

Model number
UK - 1125



Model number
UK - 1126

Model number
UK - 1119



Model number
UK - 1120

Model number
UK - 1127



Model number
UK - 1128

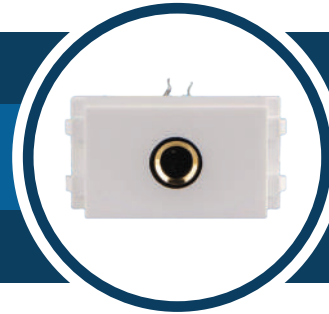
Model number
UK - 1129



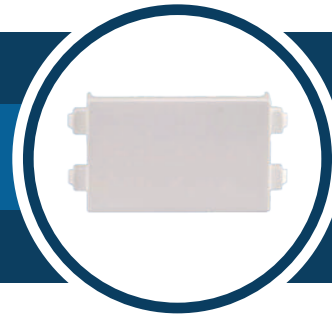
Model number
UK - 1130



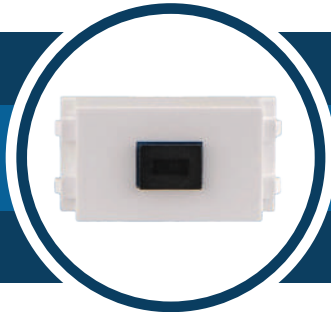
Model number
UK - 1137



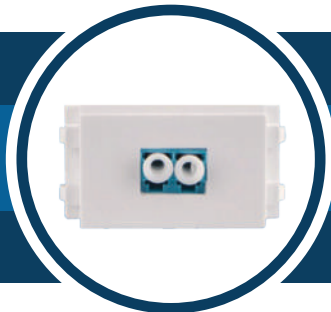
Model number
UK - 1138



Model number
UK - 1131



Model number
UK - 1132



Model number
UK - 1139



Model number
UK - 1140



Model number
UK - 1133



Model number
UK - 1134



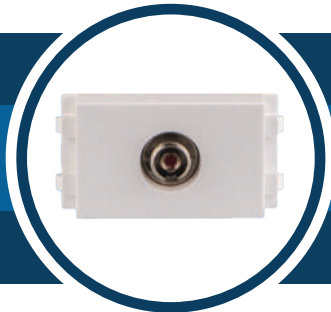
Model number
UK - 1141



Model number
UK - 1142



Model number
UK - 1135



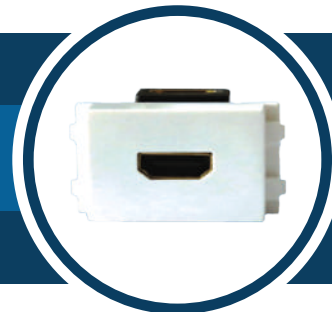
Model number
UK - 1136



Model number
UK - 1143



Model number
UK - 1144





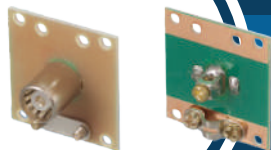
Model number
UK - 1145



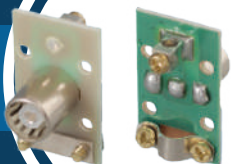
Model number
UK - 1146



Model number
UK - 1147



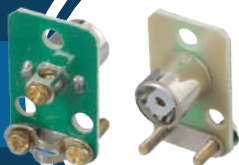
Model number
UK - 1148



Model number
UK - 1149



Model number
UK - 1150



Model number
UK - 1151



Model number
UK - 1152



OUR TEAM

We have a team from several countries that has the ability to take responsibility and work on developing products and producing them in distinct ways. We are very excited to introduce ourselves and share our innovative new ideas with our customers and we will work hard to earn your trust



The whole module is made of PC flame retardant and environmentally friendly material, featuring good rigidity, impact resistance, heat resistance and flame retardancy.

High-precision phosphor bronze curved high-low needle surface is gold-plated, with good contact and oxidation resistance, ensuring data stability and high-speed transmission.

The overall PCB type compensation design guarantees the best performance of NEXT and PSNEXT, effectively improving the near-end crosstalk margin.

The needle is made of phosphor bronze. The transmission and contact performance reaches the Gigabit network standard. The 180 degree cable routing design allows the cable to withstand the minimum mechanical pressure.

The transparent IDC fixed back cover helps the user to check the termination condition for cable fixing.

ROHS standard.



The whole module is made of PC flame retardant and environmentally friendly material, featuring good rigidity, impact resistance, heat resistance and flame retardancy.

The surface of the high-precision phosphor bronze contact pin is gold

-plated, with good contact and oxidation resistance, ensuring data stability and high-speed transmission.

The overall PCB type compensation design guarantees the best performance of NEXT and PSNEXT, effectively improving the near-end crosstalk margin.

The needle adopts phosphor bronze, the transmission and contact performance reaches the Gigabit network standard, and the 45 degree chamfer design makes the cable easily broken and provides reliable cable tensile strength.

Rotary-type threading, no need for tools to facilitate installation greatly improve work efficiency, protect the internal IDC contacts from working in harsh environments.

ROHS standard.

**UKKO ELECTRICAL
INDUSTRY CO.LIMITED**